

RX Series

500*500(flat lock/curved lock)



Ultra- light and thin



Fast heat dissipation



High strength



Easy to install



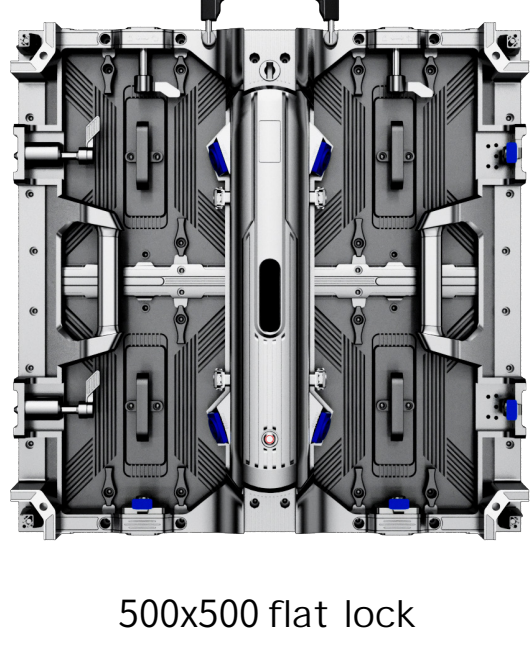
High precision



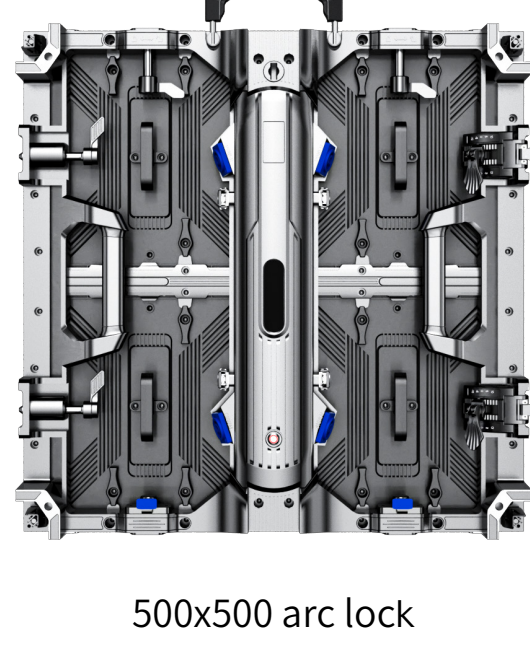
Easy to maintain

Cabinet appearance

Safety protection design with high reliability and long life



500x500 flat lock



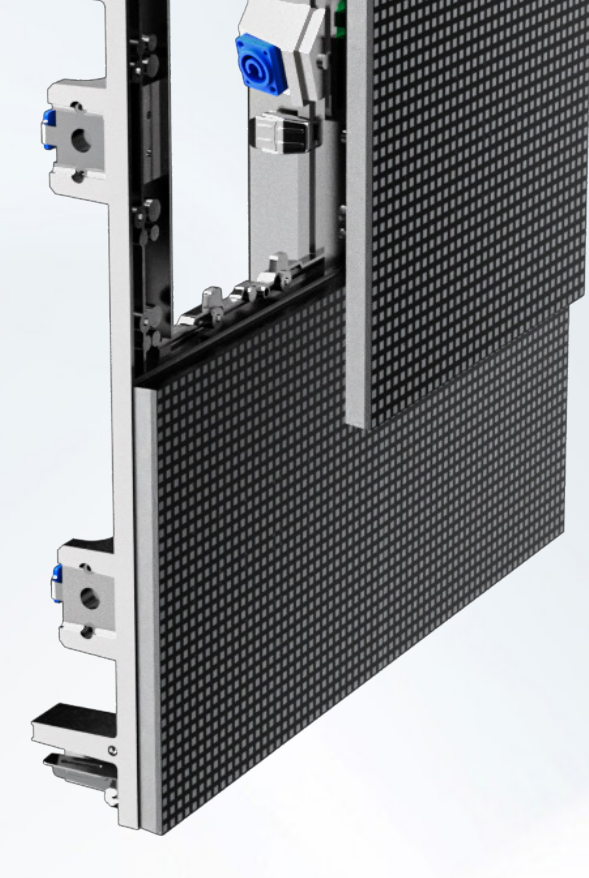
500x500 arc lock



500x500 45°flat lock

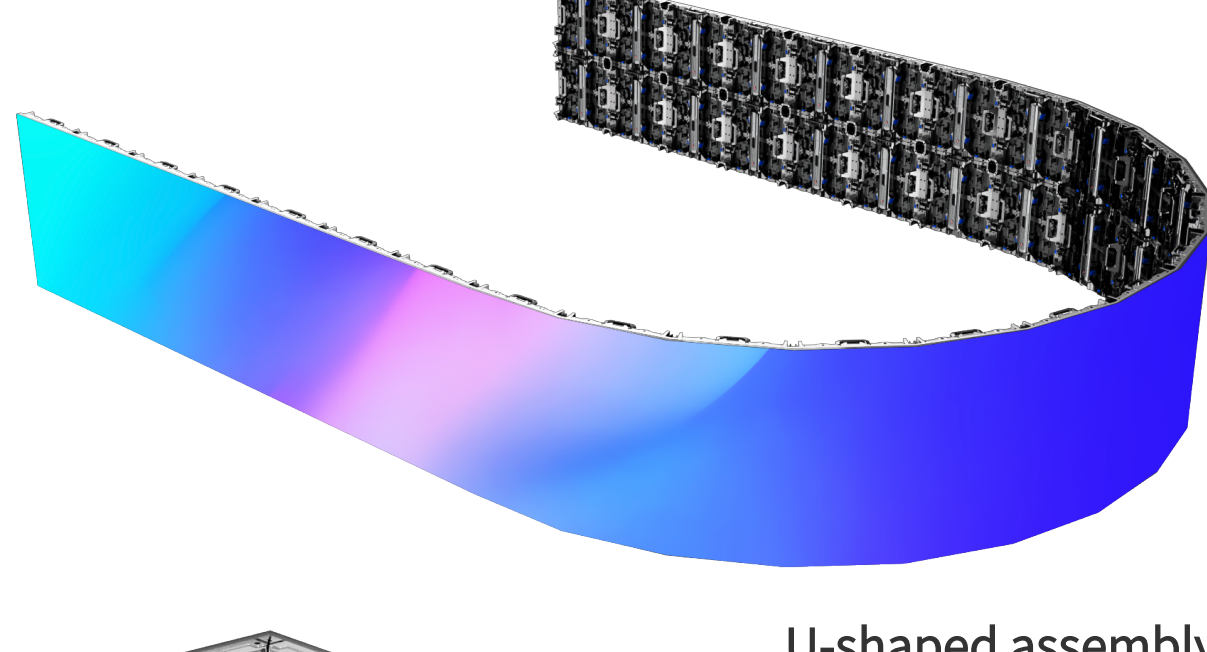
Support Front and Rear service

Double maintenance, no fan, no noise, low power to truly achieve peace of mind, effort and time for customers.

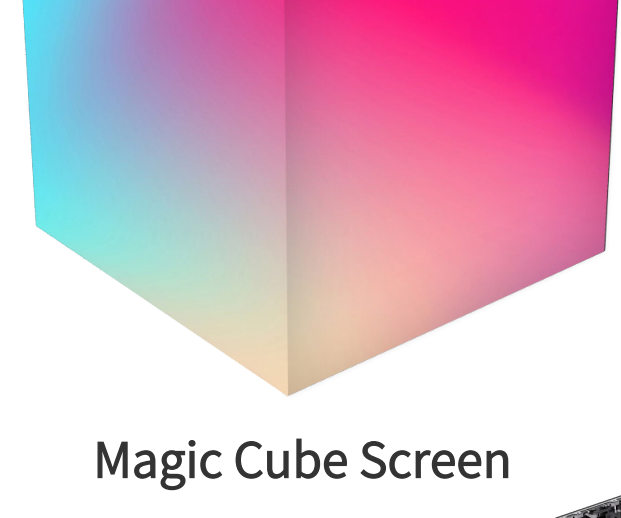


Modeling display

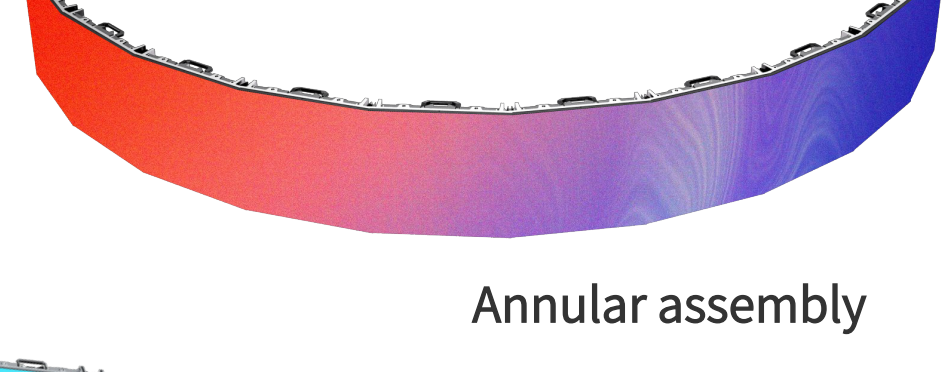
The cabinet can be customized and spliced at will Inner arc, outer arc or curved screen can be spliced at will



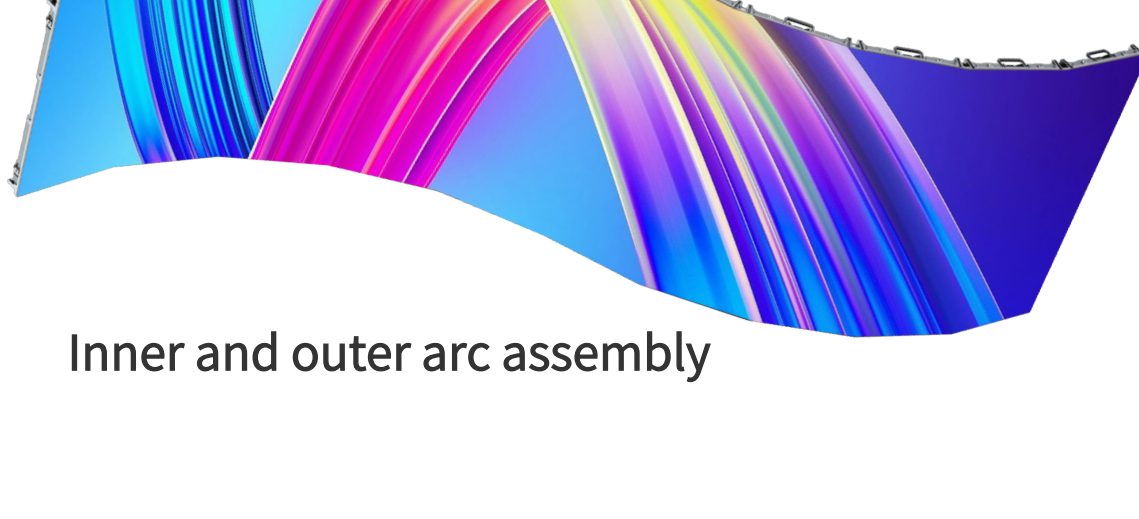
U-shaped assembly



Magic Cube Screen



Annular assembly



Inner and outer arc assembly

Application scenarios



Exhibition hall display



Radio and television



Outdoor stage



Production release conference



Monitoring and command



Large party

Specification parameters

Product Name	500x500 flat lock	500x500 arc lock	500x500 45° flat lock
Specification	500 (W) *500 (H) *68 (D) mm		500 (W) *500 (H) *68 (D) mm
Weight no module , no power	4.35KG	4.6KG	3.9KG
Pixel pitch	P1.953/P2.604/P2.976/P3.91/P4.81		
Module size	250*250mm		
Material	Aluminum alloy		
Install mode	Hoisting, base installation, fixed installation		
Usage environment	Indoor/Outdoor		
Color	silver gray		
Radian	/	-6°/-3°/0°/3°/6°	/
Standard accessories	Flat lock, 2 sets Position the glass beads 2pcs	Arc lock, 2 sets	Flat lock, 2 sets
	1pcs rear cover, 2sets of upper and lower locks, 1pcs handle, 2pcs positioning columns, 2pcs powerstrips, 1.3 pcs connecting plates, and 1pcs indicator light		